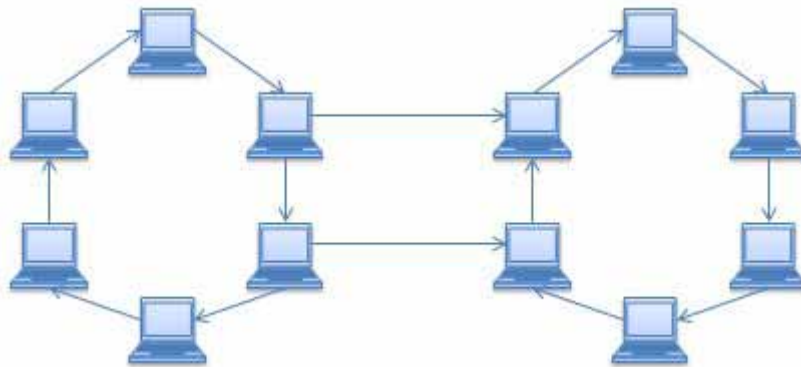




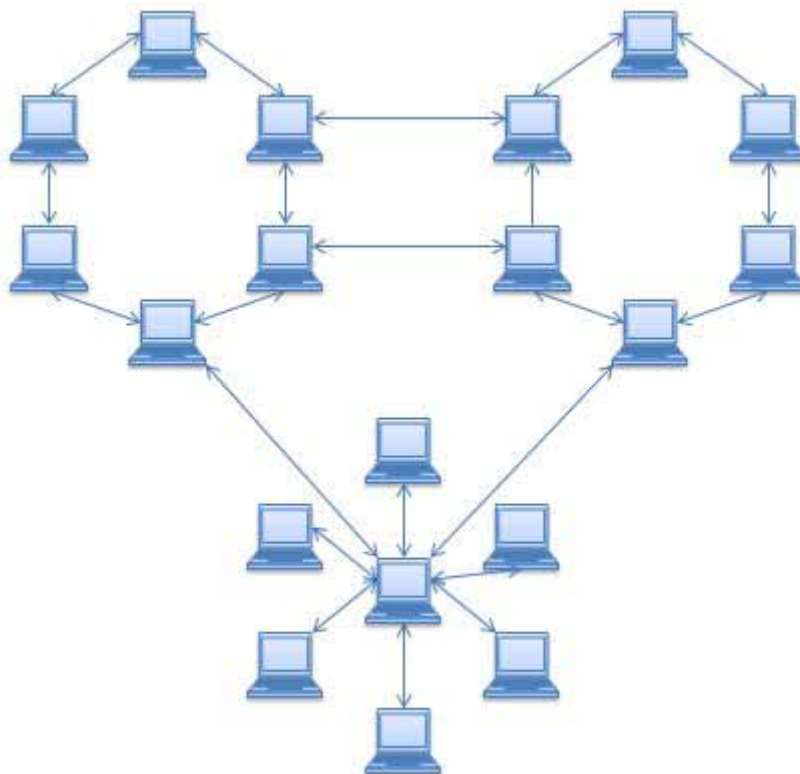
A Christian Website for everyone

Images

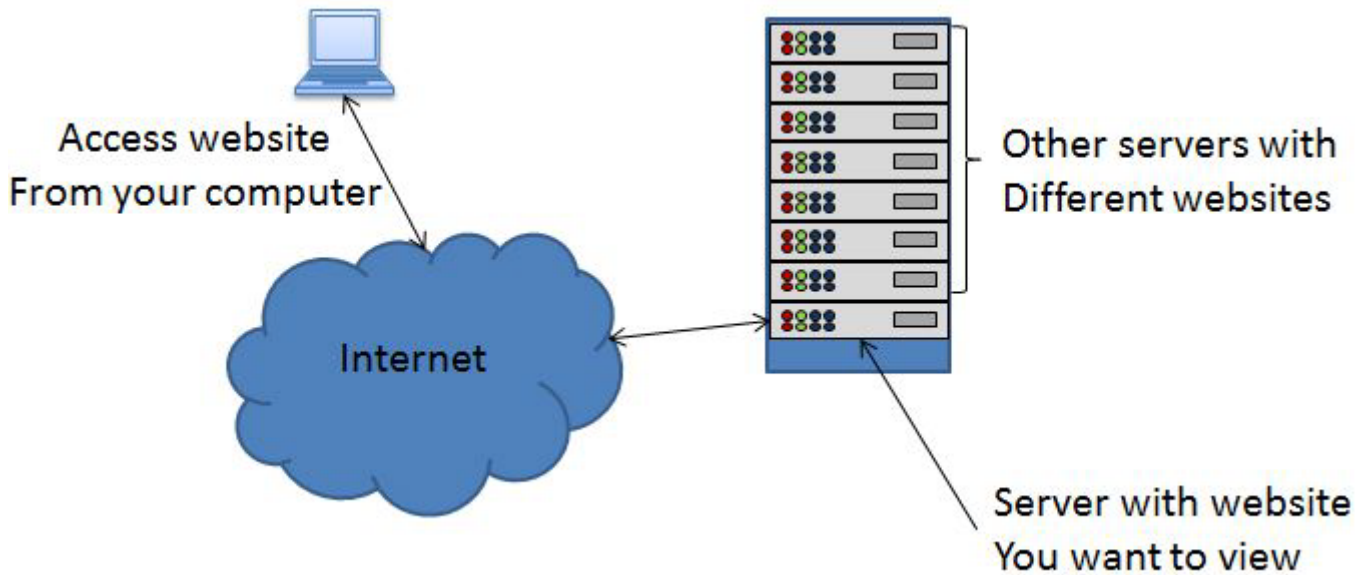
These are provided as is and may be used by you in any non commercial manner you choose. We'd be grateful if you use the images that you acknowledge where you obtained them.



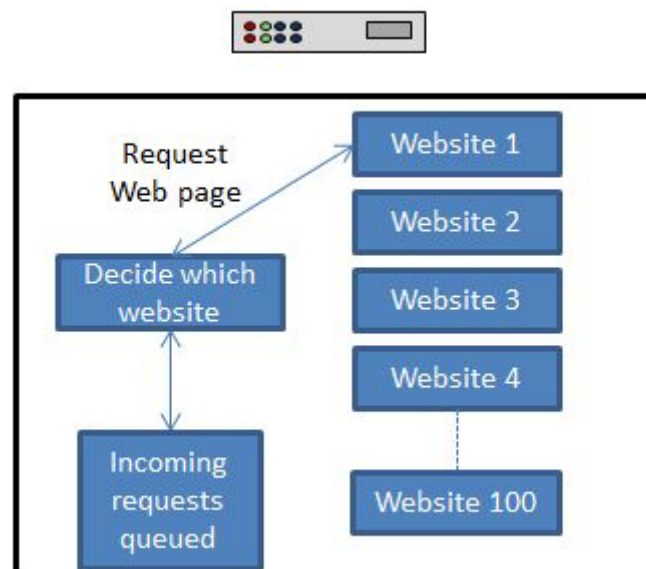
Simple network topology showing two groups of computers joined together this is the type of thing that forms the basis for the Internet



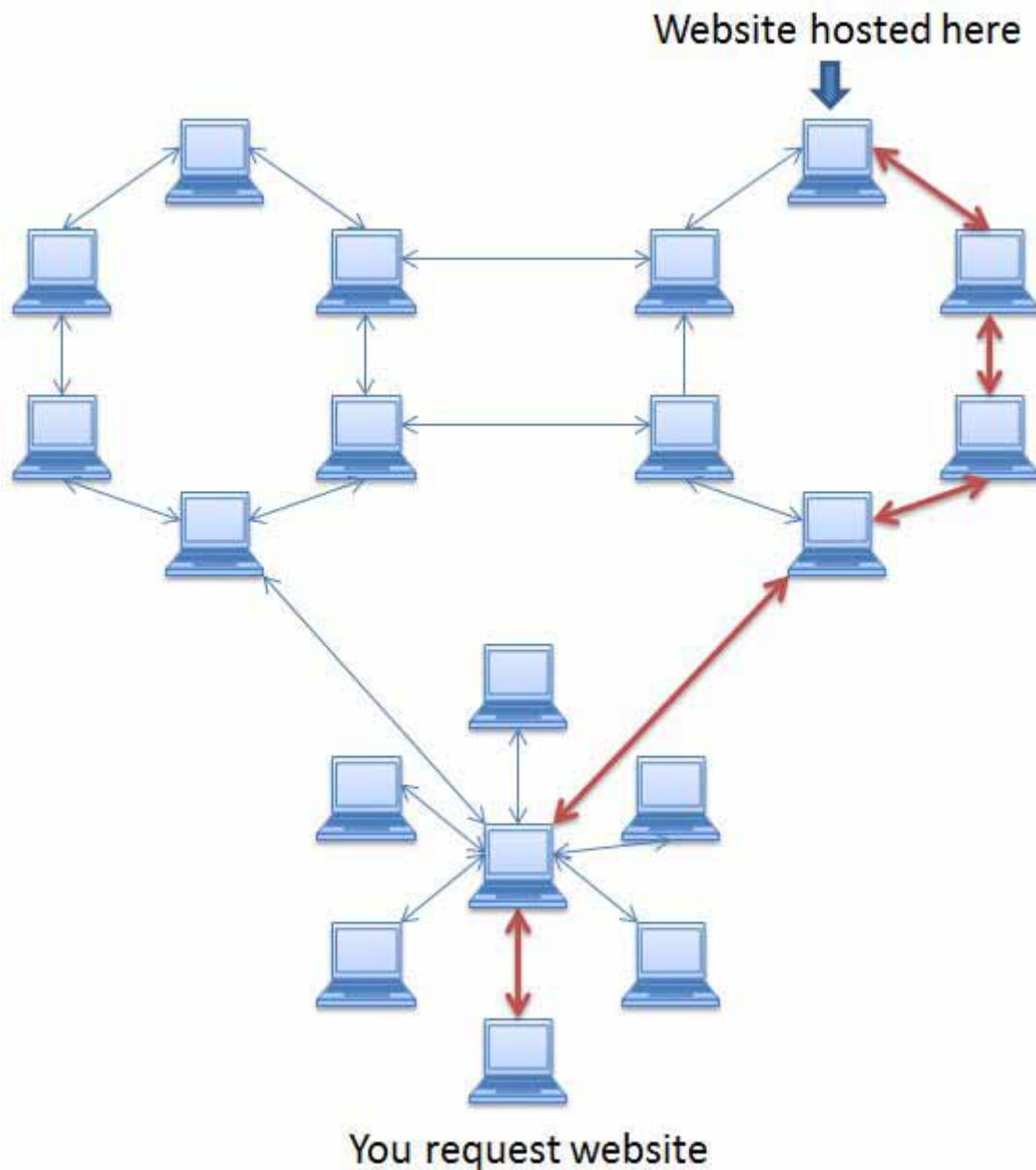
A more complex network topology showing three groups of networks joined together, two are in a ring formation and the third in a star formation. The star formation communicates with the other two only via it's central computer.



A simple diagram showing how your computer connects through the internet to a server computer which is hosting the website that you want to view.



A diagram showing the basic process followed when a request is received by a server which hosts multiple websites. It illustrates that there can be speed issues when a server hosts more than one website. It is worth emphasizing though that this is not generally an issue unless you have a very high volume website.



This diagram shows a basic network topology with red arrows linking a computer requesting a website with a computer providing one. It is included to relate the initial diagrams to the latter one showing a "cloud" rather than computers linked together.



## DNS Propagation Check

<input type="text" value="www.websites4christians.co"/>	NS	<input type="button" value="Search"/>
Phoenix AZ, United States (Cox)	NS2.websites4christians.com. NS1.websites4christians.com.	✓
Seattle WA, United States (Speakeasy)	NS2.websites4christians.com. NS1.websites4christians.com.	✓
Grapevine TX, United States (bigguy.gte.net)	NS2.websites4christians.com. NS1.websites4christians.com.	✓
Boston MA, United States (Speakeasy)	ns2.erupromotions.com. ns1.erupromotions.com.	✓
New York NY, United States (Speakeasy)	NS2.websites4christians.com. NS1.websites4christians.com.	✓
Portland OR, United States (Electric Lightwave)	NS2.websites4christians.com. NS1.websites4christians.com.	✓
London, United Kingdom (BT Global)	NS2.websites4christians.com. NS1.websites4christians.com.	✓
Paris, France (Kaptch)		✗
Rome, Italy (Telecom Italia)	ns2.erupromotions.com. ns1.erupromotions.com.	✓
Moscow, Russia (Petersburg Internet)	NS2.websites4christians.com. NS1.websites4christians.com.	✓
Ankara, Turkey (TTNET)	NS2.websites4christians.com. NS1.websites4christians.com.	✓
Merzig Saarland, Germany (Probe Networks)	ns2.erupromotions.com. ns1.erupromotions.com.	✓
Hong Kong, China (PCCW)	NS2.websites4christians.com. NS1.websites4christians.com.	✓
Melbourne VIC, Australia (Optus)	NS2.websites4christians.com. NS1.websites4christians.com.	✓
Sydney NSW, Australia (Exetel)	ns2.erupromotions.com. ns1.erupromotions.com.	✓
Auckland, New Zealand (Xtra)	NS2.websites4christians.com. NS1.websites4christians.com.	✓

When a site has an IP address that IP address is identified using a Nameserver. The nameserver is unique and helps other computers find the site. When a site changes either its IP address or its Nameserver new details need to be published across the world routing tables. This diagram shows that happening. You can see that ns2.erupromotion.com was the initial nameserver (text pointing to the IP address) and gradually the new nameserver is replacing it across the world.